

Vase mit Blätter-Dekor, Notley 2000: England um 1890, Nachtrag zu PK 2008-4

SG: Nach dem Dekor und der Farbe hatte ich das Glas in Jugendstil oder Art Déco vermutet. **Frau Zeh hat diese interessante Fußvase mit Blätter-Dekor bei Raymond Notley, Popular Glass ..., 2000, gefunden!** Der Hersteller ist noch immer unbekannt, muss aber bei den Glaswerken gesucht werden, die um 1890/1900 „Slag Glass“ hergestellt und angeboten haben. „Celery Vase“ sind schmale Vasen, sie haben nichts mit Sellerie zu tun!

Abb. 2008-4/260
Fußbecher / Vase mit Blätter-Dekor
bernstein-farbiges Pressglas, H 25 cm, D 13 cm
Sammlung Zeh
PK 2008-4, SG: Hersteller unbekannt, England?, um 1930
PK 2009-2, Zeh: England, um 1890,
s. Notley, Popular Glass ..., 2000, S. 15



SG: Die Bücher von Raymond Notley sind **in England noch im Handel** - zu finden mit GOOGLE und AMAZON.co.uk.

Abb. 2009-2/102
Fußbecher / Vase mit Blätter-Dekor
opak-graues, marmoriertes Pressglas, H 25 cm, D 13 cm
Sammlung Notley
PK 2009-2, Zeh: England, um 1890,
s. Notley, Popular Glass ..., 2000, S. 15
„An opaque marbled grey glass celery vase, English, c. 1890“



“**Raymond Notley** is the Lecturer Emeritus of **Sotheby's Institute of Art** where he has taught there since 1987. His wide range of interests includes the history of glass and ceramics, as well as design and decorative interiors. The latter includes many aspects of Russian art and manufacture. He has published and has curated several **glass related exhibitions** as well as donating items to many museums. He delivered the Robert Charleston Memorial Lecture of 1999.”

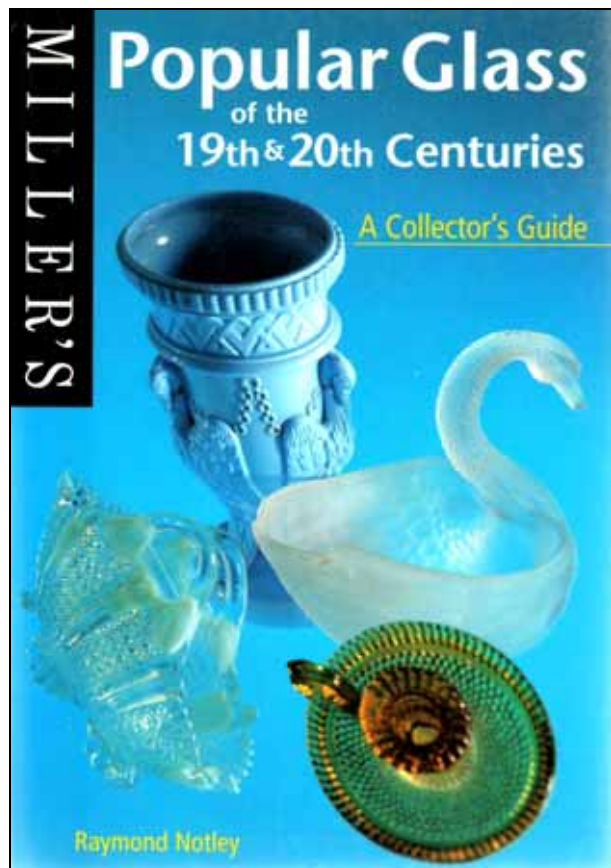
[<http://www.sothebysinstitutelondon.com ...>]

“**Raymond Notley** has a wide knowledge of **Victorian and Edwardian decorative and graphic arts**, but perhaps it was growing up in Durham surrounded by coal mines and glassworks which first fostered his interest in

glass. He is joining owner of the **Notley-Lerpiniere collection** of glass, which has been exhibited throughout Britain and is now on permanent loan to the **Broadfield House Glass Museum, Dudley.**”
[<http://www.shirebooks.co.uk> ...]

Abb. 2009-2/103

Notley, Raymond, Popular Glass of the 19th & 20th Centuries
London, Millers, 2000, Einband



“**Raymond Notley** is a design historian and Lecturer Emeritus at **Sotheby's Institute**, London. He has taught at Sotheby's since 1987 and specializes in the decorative arts of the 19th and 20th centuries, the history of glass, Western ceramics since 1789 and the history of design. He is a member of the **Glass Circle** and is on the board of **The Association of Glass History**. He has donated glass to many museums, including the **Victoria & Albert Museum** in London, and his **1000-piece study collection** is on permanent loan to **Broadfield House Glass Museum** in the West Midlands. Raymond has traveled and researched extensively around the world and is highly respected in his field.” [Miller's]

Abb. 2009-2/104

Raymond Notley
aus <http://www.sothebysinstitutelondon.com> ...



“As you **voyage across the sea on the Queen Mary 2** [2010-07], take part in an in-depth program of lectures on antiques. **Raymond Notley's** engaging multimedia presentations teach you the specialized language of antiquing and introduce you to some of history's greatest styles of furniture, glass and jewelry and the significance of names like Fabergé, Tiffany and Lalique. Test yourself in an identification session and see if you can tell the real antiques from the fakes.”
[<http://www.elderhostel.org> ...]

Literaturangaben

Notley 1983	Notley, Raymond, Carnival Glass, Aylesbury, Bucks, England 1983/1997, Shire Album 104
Notley 1986	Notley, Raymond, Pressed Flint Glass, Aylesbury, Bucks, England 1986, Shire Album 162
Notley 2000	Notley, Raymond, Popular Glass of the 19th & 20th Centuries, London, Millers, 2000

Siehe unter anderem auch:

- PK 2001-1 Zeh, **Schöne Pressgläser aus der Sammlung Zeh. Hinweise gesucht!**
- PK 2002-5 Zeh, **Alte und neue Erwerbungen von außergewöhnlichem Pressglas**
- PK 2004-1 Zeh, **Interessante Pressgläser in der Sammlung Heidrun und Horst Zeh**
- PK 2004-1 Zeh, **Neue alte form-geblasene Gläser in der Sammlung Zeh**
- PK 2004-2 Zeh, **SG, Fußschale und Schalen „Helios“, Heinrich Plötz & Co., Ottendorf-Okrilla, 1915**
- PK 2004-2 Zeh, **Becher König Albert von Sachsen, Hersteller unbekannt, Sachsen (?) 1898**
- PK 2004-4 Zeh, **Wieder einmal: Interessante Pressgläser aus der Sammlung Zeh**
- PK 2004-4 Zeh, **Blaue und grüne weinblatt-förmige Fußschale mit blatt-förmigen Tellern**
- PK 2004-4 Zeh, **SG, Fußbecher mit Akanthus-Ranken und Sablée von St. Louis, um 1840**
- PK 2004-4 Zeh, **SG, Schlechte - und gute - Erfahrungen mit Käufen bei eBay-Frankreich!**
- PK 2006-2 Zeh, **Röse, Fehr, Rühl & Sadler, SG, Blaue Schreibgarnitur mit Vögeln ...**
- PK 2008-4 Zeh, SG, Interessante Pressgläser der Sammlung Zeh (Vase Blätter / Notley)**
- PK 2009-1 Save Broadfield House Glass Museum, Kingswinford, West Midlands, UK**
- PK 2009-2 SG, Pressglas von S. Reich & Co. 1925 bei L. LePersonne & Co., London 1927 / Notley**