



Abb. 2010-2/116

Hen on Nest Covered Dishes, 7 different sizes, made by Vallerysthal / Portieux; Photo courtesy of Gil Bowen

Shirley Smith, SG

Mai 2010

Hen on Nest Covered Dishes, Marked SV Schmid Verreries, Vannes-le-Chatel, Frankreich

Shown above for comparison, are the seven sizes of hen on nest covered dishes made by Vallerysthal / Portieux. From right to left, the sizes are 8-inch, 7-inch, 6-inch, 5-inch, 4-inch, 3-inch, and 2-inch. They have been seen in milk glass, opaque blue, opaque green, milk glass painted, translucent amber, translucent pink, translucent blue, translucent green, cobalt, opaque gray, opaque lilac, opaque pink, clear, and clear frosted. These may have an impressed maker's mark ("VALLERSTHAL" or "PORTIEUX"), or they may not have any impressed mark at all. Some of the 2-inch hen dishes have "FRANCE" etched on the inside rim of the base. Some of these have been seen with a "PV" label.

The hen dishes seen with the "SV" impressed mark have long been a puzzle to collectors. Some said that the initials stand for "Sarrebouurg Vallerysthal", but that has more or less been discredited since the hen dishes show enough differences in their forms and sizes to preclude Vallerysthal moulds being used for the "SV" hen dishes. Besides, the "SV" and Vallerysthal hen dishes were being produced at about the same time (1890-1930) in the same general region of France, and surely two different factories were not using the same moulds. Some have said that perhaps the "SV" stands for "Société Anonyme des Verreries Réunies" (combination of Vallerysthal and Portieux at one point in their history). This has also proven not to be the case also.

Abb. 2010-2/117

Hen on Nest covered dish as shown in both the 1881 and 1896 Schmid Verreries catalogs. Compare this hen to the 8-inch hen shown to the right



Abb. 2010-2/118

SV 8-inch hen dish
Photo courtesy of Barbara Scott



Rush Pinkston reported in the June 1989 issue of Opaque News, that he had contacted the Vallerysthal factory about the "SV" items and was told that they were produced there for an importing company who wanted the Vallerysthal name removed and their initials put on the items. However, Mr. Pinkston merely reported what he was told by the persons at the Vallerysthal plant. This report was a good fifty years after the items had been made so it is probable, and highly likely, that the people

at the plant were merely speculating. **The documented observed difference in sizes and mould details also negates the Vallerysthal attribution.**

Two catalogs from the Schmid glass company (Schmid Verreries, Vannes-le-Châtel, France, 1765 - nowadays), 1881 and 1886, show an artist's rendering of a hen on nest covered dish: "No. 1219 Poule". Since this is shown along with other items that can positively be identified as having the "SV" mark, it is assumed that the hen covered dish also had this mark. Even more defining is the fact that under the hen illustration are the numbers "1, 2, 3 et 4, 5, 6, et 7". It is assumed that these numbers refer to **different sizes** made in the hen on nest form. From observations by several collectors, it has become apparent that the "SV" hens were made in six or seven sizes; this confirms their observations.

It is not clear at this point whether the #2 and #3 hens described below are the same since collectors often round off the dimensions in describing an item. Also, **Mr. Pinkston** reported in his article on Vallerysthal / Portieux in Opaque News [ON June 89] that another collector in the United States had in his collection a "very large 9-10" hen on a basket base with the "SV" mark." This particular hen dish also had a **red stamped mark** inside saying "E. Mussuri de Rozaa Rue Vacon Marseille". Most, but not all, of the „SV" hen dishes are mould-marked with the letters „SV" inside the top and either inside the base or on the bottom of the base on the middle cross weavings. There is often, but not always, a **number accompanying the "SV"** and this seems to relate to the size. Since so many of these hen on nest covered dishes look alike, it is important to notice small details, especially the design on the bottom of the base. Included in the forms and sizes listed below are a **double salt and an egg cup**, which relate to hen on nest covered dishes. The double salt has been reproduced, very poorly in a green translucent glass, by a company in Mexico and is not marked. A very similar egg cup has been made by Vallerysthal, Westmoreland, and probably other European and American companies.

Forms and sizes of "SV" marked hen covered dishes

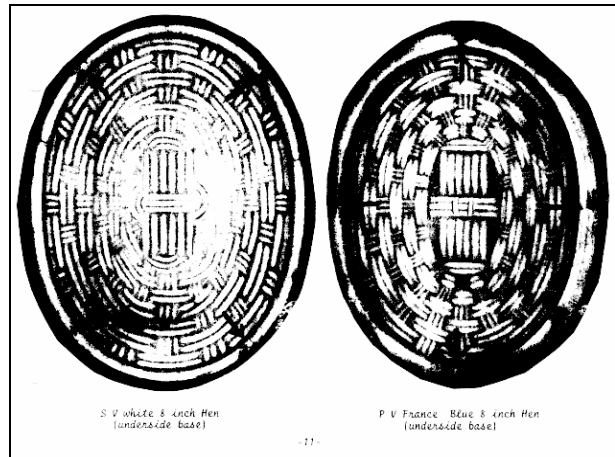
1. SV 8 inch hen dish (Abb. 2010-2/xxx)

Base 8" x 6 2/8", top 7 1/2" x 5 3/4"
Head turns left, two eggs each side front, one egg each side back at the base of the split tail.
Known in black opaque and milk glass handpainted.
Other colors are possible.
For more pictures and a description see **Chiarenza & Slater, The Milk Glass Book, p. 47**

In Opaque News, June 1995, pp. 10-11, **Judith Lloyd** described in great detail the **differences between this hen dish marked "SV" and the 8-inch Vallerysthal hen dish**. The two vary in the length and curve of the beak, the eyes, the body details and the bases. The main difference is the molding on the bottom of the base as shown in the pictures below. Note the design of the middle lines, in particular the two tiny crossbars of the

PV (Vallerysthal) hen dish and the curved end bars on the "SV" hen dish.

Abb. 2010-2/119
Photos showing the bottom of the base for the „SV" marked 8-inch hen dish and for the „PV" labeled (Vallerysthal) hen dish
Photos courtesy of Judith Lloyd



2. SV 7 inch hen dish

Base 6 3/4" x 5 1/2", top 6 1/8" x 5"
Signed "SV 2"
Head turns left, two eggs each side front, one egg each side back at the base of the split tail
Known in frosted purple top and base not frosted; also clear frosted top, and clear top and clear base
It was probably made in other colors.

Abb. 2010-2/120
SV 7-inch hen dish. Clear frosted top, clear base
Mould-marked with the number „2" below the „SV" inside the top and also on the outside of the base bottom in the middle of the crossbars
Collection of Shirley Smith



Abb. 2010-2/121
SV 7-inch hen dish base bottom
Collection of Shirley Smith



Abb. 2010-2/122
SV 7-inch hen dish base bottom, impressed mark "SV 2"
Collection of Shirley Smith



3. SV 6 inch hen dish

Exact measurements not known. Glass colors not known. This size is a mystery since no one has reported ever seeing one. It is only assumed to exist.

4. SV 5 1/8 inch hen dish

Head turns left, two eggs each side front, one egg each side back at the base of the split tail
Known in milk glass painted, blue opaque and green opaque

Abb. 2010-2/123
SV 5-inch hen dish. Very Scarce
Photo courtesy of Frank Chiarenza



Abb. 2010-2/124
SV 5-inch hen dish, signed
Collection of Barbara Scott



Abb. 2010-2/125 →
 SV 4-inch hen dish base bottom
 Collection of Shirley Smith

Abb. 2010-2/126
 SV 5-inch hen dish. Both top and bottom are marked
 From France



5. SV 4 inch hen dish

Base 4 1/4 "x 3 3/8 ", top 3 5/8 " x 2 7/8 "
 Head turns left, two eggs each side front, one egg each side back at the base of the split tail. Tiny round eye
 Known in clear, translucent green, clear, translucent blue, milk glass with paint.
 Signed „SV 5”

Abb. 2010-2/127
 SV 4" hen dish. Marked
 Collection of Shirley Smith



Abb. 2010-2/128
 SV 4-inch. Signed „SV5”
 Collection of Barbara Scott



Abb. 2010-2/129
 Possible SV 4-inch. Not marked
 Shown here to illustrate how confusing attribution of these hen on nest covered dishes may be.
 Photo courtesy of Linda Nash collection



Abb. 2010-2/130
 SV 4-inch. Base bottom. Note how this differs from the milk glass base bottom shown above. It is not known if this difference was due to different moulds for the base or whether this was made by a different company
 Photo courtesy of Linda Nash collection



Abb. 2010-2/132
 SV 3-inch hen dish base bottom.

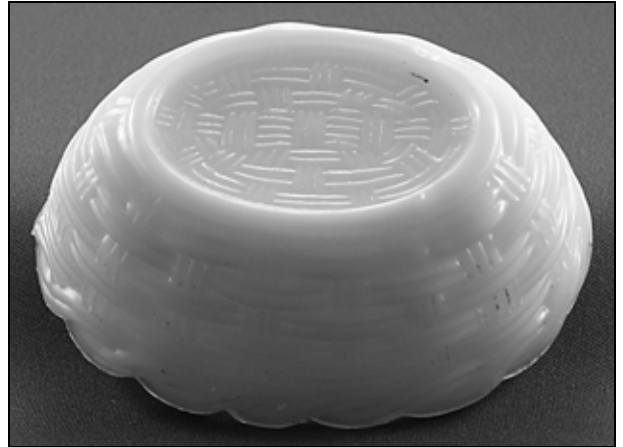


Abb. 2010-2/133
 SV 3-inch hen dish, black opaque painted
 From England



6. SV 3 inch hen dish

Base 3-5/8 " x 2-5/8 ", top 3-1/8 " x 2 1/4 "
 Head turns left, one egg each side front, one egg each side back at the base of the split tail
 Known in blue opaque, green opaque, caramel opaque, and milk glass painted
 see Chiarenza & Slater, The Milk Glass Book, p. 61

Abb. 2010-2/131
 SV 3-inch hen dish. Caramel opaque
 Courtesy of Gil Bowen



Abb. 2010-2/134
 SV 3-inch hen dish, milk glass painted
 From France



7. SV 2 inch hen dish (salt)

Base 2 1/2" x 1-13/16", top 2 1/8" x 1 1/2"
 Head turns left, two eggs each side front, one egg each side back at the base of the split tail
 foot ring on bottom of base is plain
 Known in milk glass painted, milk glass, blue opaque and caramel

Abb. 2010-2/135
 SV 2-inch hen dish salt, blue opaque
 marked inside the top and inside the base
 the mark in the top has the „S” reversed
 Collection of Shirley Smith



Abb. 2010-2/136
 SV 2-inch hen dish, caramel
 marked SV7 in top only
 Collection of Shirley Smith



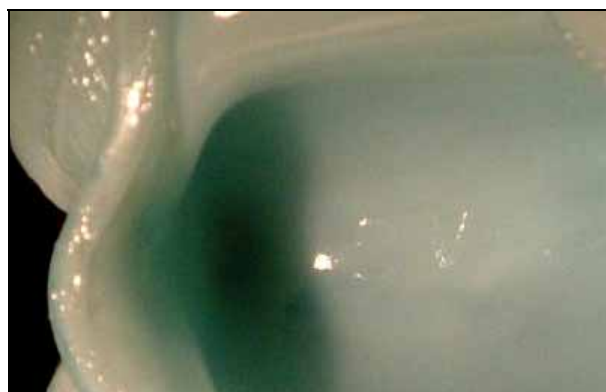
Abb. 2010-2/139 →
 SV egg cup, opaque blue, marked
 Photo courtesy of Gil Bowen

8. SV double salt. 3 inches long, 4 1/4 inches wide

Abb. 2010-2/137
 SV double salt marked
 Photo courtesy of Gil Bowen



Abb. 2010-2/138
 SV double salt impressed mark "SV"
 Photo courtesy of Gil Bowen



9. SV egg cup, 2 inches diam., 4 1/4 inches high



Abb. 2010-2/140
SV egg cup impressed mark "SV"
Photo courtesy of Gil Bowen



Reference:

- Chiarenza, Frank
Private communication, September 2005
- Chiarenza, Frank & James Slater
The Milk Glass Book, Schiffer 1998, p. 47
- Lloyd, Judith, "PV" & "SV" Hen Covered Dishes,
Opaque News, June 1995, p. 10-11
- Nash, Linda
Private communications and pictures
- Pinkston, Rush, Vallérystal & Portieux Glass
Opaque News, June 1989, p. 434
- PK 2006-1, pp. 204-212, Hennen mit Eiern auf einem
Korb - ein Vergleich: Vallérystal - Marke "SV"
- PK 2004-3, p. 375, Abb. 2004-3/468,
SV Hen dish from eBay France
- Scott, Barbara
Private communications and pictures

Smith, Shirley
Glass Hen on Nest Covered Dishes, Collector Books
2007

Supplement SG:

Schmid Verreries, Vannes-le-Château / Allamps, France:
the first glass house was founded 1765 by a Comtesse
de Maziot, later it was rent and bought from the glass
masters family Schmid, this glass company was for the
first time sold about 1960 and is still working 2010.

PK Abb. 2000-4/042
Fantasie-Zucker- und Butterdose Nr. 91
[Formenfabrik August Riecke, Dresden-Deuben, um 1895](#)
aus Franke / Buddensieg 1981, S. 264
Korb mit schrägem, geflochtenem Rand
3 senkrechte und 2 wagrechte Flechtruten
SG: perhaps this mould was the mother of all hen dishes



Siehe unter anderem auch:

- PK 1999-3** [Pinkston, Glas aus Vallérystal & Portieux](#)
[Übersetzung aus Opaque News, IV/1, Dez. 1988, S. 411-413 und folgende Ausgaben](#)
- PK 2000-4** [SG, Die berühmte "Henne im Korb"](#)
[Deckeldosen aus Pressglas mit Tieren und Pflanzen-Motiven](#)
- PK 2000-4** [Bickel, Pressglas-Glücken in Belo Horizonte, Minas Gerais, Brasilien](#)
- PK 2004-4** [SG, Chiarenza, Eine Henne mit fünf Küken auf einem Korb, S. Reich & Co., Krásno, 1873 - die älteste noch existierende Pressglas-Henne Europas oder der Welt?](#)
- PK 2004-4** [SG, Henne mit sechs Eiern auf einem Korb, Ohnstein & Lachmann, Haynau i. Schl., 1896](#)
- PK 2004-4** [SG, Henne ohne Eier auf einem Korb, S. Reich & Co., Krásno - Wien, 1873 bis 1934](#)
- PK 2004-4** [SG, Sechs Hennen mit Küken bzw. Eiern auf einem Korb im Vergleich](#)
- PK 2004-4** [Christoph, SG, «Oisons dans un mouchoir noué» - Vögel in einem Taschentuch als Deckeldose: Pressformen von F. W. Kutzscher, Deuben bei Dresden, für Vallérystal um 1890?, für Riihimäki um 1939?](#)
- PK 2006-1** [Christoph, SG, Hennen mit Eiern auf einem Korb - ein Vergleich: Vallérystal - Marke „SV“](#)
www.pressglas-korrespondenz.de/aktuelles/pdf/pk-2006-1w-christoph-hennendosen-SV-vall.pdf

- PK 2008-3 Morin, „Mystery Hens“ & „Hens with no Name“ - SG: all four can now be attributed!
Gebrüder von Streit, Berlin, & August Walther, Ottendorf, - about 1900 - 1915
- PK 2008-3 Nash, Smith, SG, Zwei Hennen auf einem Korb mit Flechtmuster, breiter Rand mit überkreuzenden Bögen: August Walther & Söhne, Ottendorf-Okrilla, ab 1895? - 1939?
- PK 2008-3 Smith, SG, The „Arches hen dish“ might be from Walther 1904
- PK 2008-3 Smith, SG, A Clear Blue Mathew Turnbull Hen Dish, Rd.No. 117815
Cornhill Glass Works, Southwick, Sunderland, 1890s
- PK 2008-3 Fastner, Smith, SG, Henne auf Korb mit Flechtmuster, breiter Rand mit überkreuzenden Bögen: August Walther & Söhne, Ottendorf-Okrilla, ab 1895? - 1931**
www.pressglas-korrespondenz.de/aktuelles/pdf/pk-2008-3w-fastner-walther-henne.pdf
- PK 2008-3 Nash, Smith, SG, Zwei Hennen auf einem Korb mit Flechtmuster, breiter Rand mit überkreuzenden Bögen: August Walther & Söhne, Ottendorf-Okrilla, ab 1895? - 1939?
- PK 2008-3 Morin, „Mystery Hens“ & „Hens with no Name“ - SG: all four can now be attributed!
Gebrüder von Streit, Berlin, & August Walther, Ottendorf, - about 1900 - 1915
- PK 2008-3 Smith, SG, A Clear Blue Mathew Turnbull Hen Dish, Rd.No. 117815
Cornhill Glass Works, Southwick, Sunderland, 1890s
- PK 2008-3 Smith, SG, Henne auf einem Korb, Westmoreland, Dekoration Abel & Wasserberg & Co.
- PK 2008-3 Smith, SG, „XXX“ Glass Hen Dishes - An Update ...
- PK 2008-3 Mauerhoff, SG, Zwei Hennen mit Eiern im Korb: Glasmuseum Frauenau - Glasmuseum Passau
-
- WEB** [http://schmidverriers.e-monsite.com ... vannes-le-chatel-54,1036391.html](http://schmidverriers.e-monsite.com...vannes-le-chatel-54,1036391.html)
Les Schmid à Vannes-le-Châtel

Abb. 2006-1/167 (Maßstab ca. 85 %)

Henne mit Eiern auf einem Korb, opak-weißes Pressglas, bunte Farben eingebrannt [brulé], H 18,9 cm, B 16,5 cm, L 20 cm

Sammlung Christoph

Marke „SV“ innen im Deckel, Marke „SV“ außen unter dem Korb, Größe Nr. 7 von 1-7, Hersteller unbekannt, Frankreich, um 1900



Abb. 2006-1/168 (Maßstab ca. 85 %)

Henne mit Eiern auf einem Korb, für das „Service à oeufs“, opak-weißes Pressglas, bunte Farben eingebrannt [brulé]

Henne H 15,7 cm, B 14,2 cm, L 17,7 cm, Marke "VALLERYSTHAL" im Korb der Henne

Sammlung Christoph, s. MB Vallérysthal 1908, Planche 307, Beurriers, Nr. 3801

