

## Ancient Glass Blog of The Allaire Collection: The Israel Museum, Jerusalem - Made by Ennion: Ancient Glass Treasures from the Shlomo Moussaieff Collection

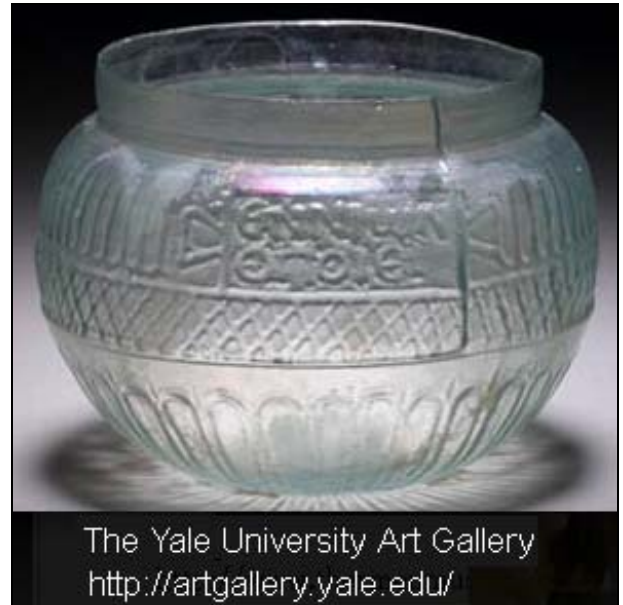
<http://ancientglass.wordpress.com/museums-glass-collections-and-exhibitions/ennion-made-me/#>  
<http://www.imj.org.il/exhibitions/presentation/exhibit.asp?id=743> (site of show)

Exhibition at The Israel Museum, Jerusalem  
2011-2012

Made by Ennion: Ancient Glass Treasures from  
the Shlomo Moussaieff Collection.

The show presents **twenty unique mold-blown glass vessels from the First century**; an exceptional group of **ancient mold-blown glass vessels**, including **seven highly rare examples of the work of the master-glassmaker Ennion**. Ennion worked as a glassmaker about 1 to 50 A.D. His signature is known from over **thirty surviving pieces**, and many other works are attributed to him on the basis of style. He created the technique of mold blowing glass vessels. This new process allowed the vessel and its decoration to be created at the same time and permitted the creation of multiple copies of the same vessel. Ennion's clear, precise designs distinguish his work; he also minimized the visibility of the lines caused by the seams in the mold. Sometimes Ennion's marketing genius is overlooked for he was one of first artists to develop a brand name, "Ennion Made Me". The location of Ennion's workshop is debated, in part because his work is **found throughout the Roman Empire**. Some scholars believe he worked in **Sidon** in modern Lebanon, while others assert that he worked in northern **Italy**. The inscriptions he frequently used as decoration may provide a clue. Though his name may have been Semitic in origin, he **signed it in Greek**, the language of the eastern Mediterranean, not Italy. The city of Sidon, where he may have worked, had all the raw material for glass-making and extensive trade connections. **Below are pictures of Ennion objects from the Shlomo Moussaieff Collection and Art Museums around the world.**

**Alle Bilder aus Ancient Glass Blog of The Allaire Collection ...**

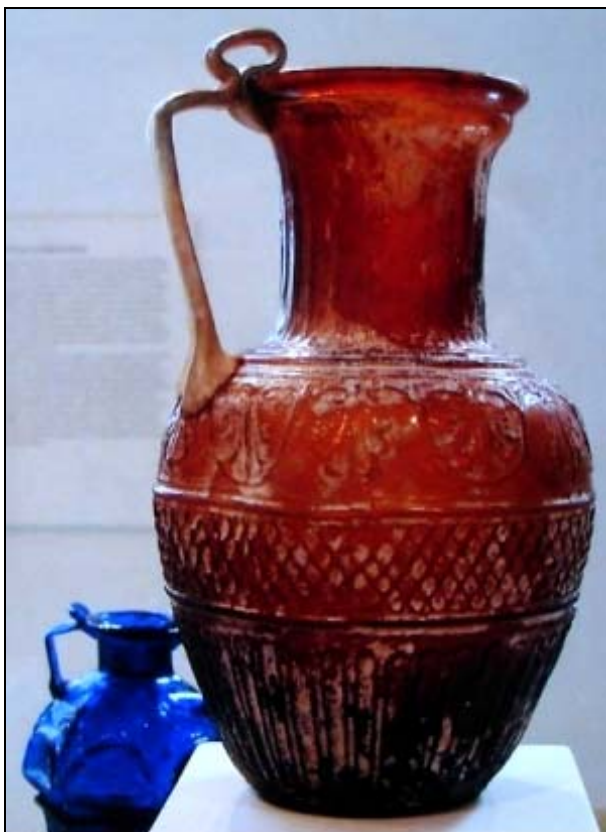




The Metropolitan Museum of Art  
<http://www.metmuseum.org/>



Shlomo Moussaieff Collection

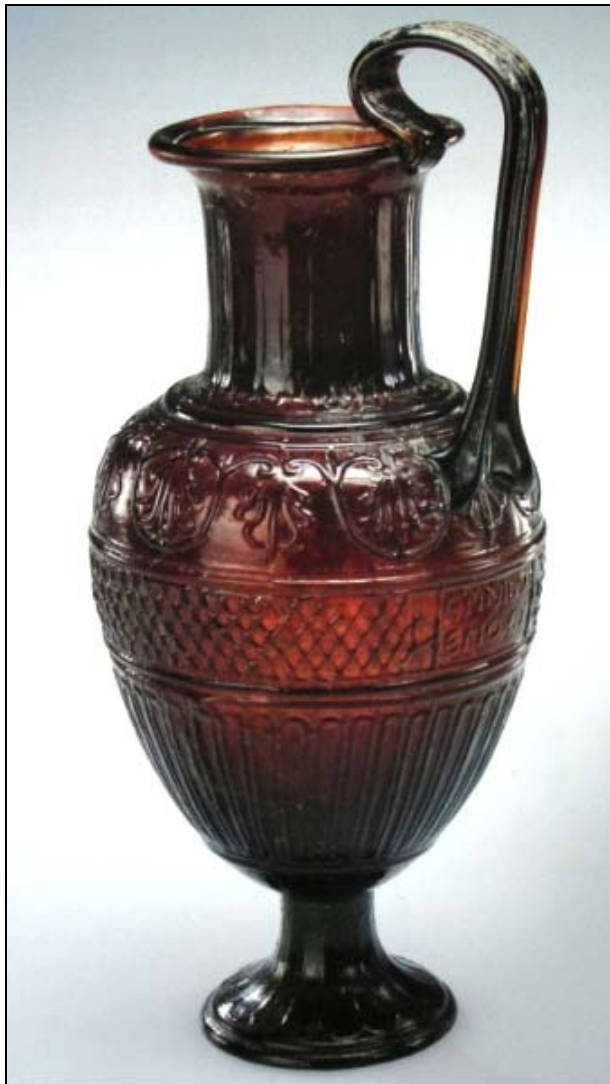


The Metropolitan Museum of Art  
<http://www.metmuseum.org/>



Corning Museum of Glass [www.cmog.org](http://www.cmog.org)





Corning Museum of Glass [www.cmog.org](http://www.cmog.org)



Shlomo Moussaieff Collection



Detroit Institute of Arts <http://www.dia.org/>



Corning Museum of Glass <http://www.cmog.org/>





Newark Museum <http://newarkmuseum.org/>



Louvre <http://www.louvre.fr/lv/commun/home.jsp?bm>

Abb. 2011-4/227  
<http://ancientglass.wordpress.com/museums-glass-collections-and-exhibitions/ennion-made-me/#>

**\*\*The Israel Museum, Jerusalem Made by Ennion: Ancient Glass Treasures from the Shlomo Moussaieff Collection** « Ancient Glass Blog of The Allaire Collecti...

ancientglass.wordpress.com/museums-glass-collections-and-exhibitions/ennion-made-me/#

Wikipedia (de)

## Ancient Glass Blog of The Allaire Collection

### \*\*The Israel Museum, Jerusalem Made by Ennion: Ancient Glass Treasures from the Shlomo Moussaieff Collection

---

An exhibition opened at The Israel Museum, Jerusalem on June 5, 2011 called Made by Ennion: Ancient Glass Treasures from the Shlomo Moussaieff Collection. <http://www.imj.org.il/exhibitions/presentation/exhibit.asp?id=743> (site of show)

The show presents twenty unique mold-blown glass vessels from the First century; an exceptional group of ancient mold-blown glass vessels, including seven highly rare examples of the work of the master-glassmaker Ennion. Ennion worked as a glassmaker about 1 to 50 A.D. His signature is known from over thirty surviving pieces, and many other works are attributed to him on the basis of style. He created the technique of [mold blowing](#) glass vessels. This new process allowed the vessel and its decoration to be created at the same time and permitted the creation of multiple copies of the same vessel. Ennion's clear, precise designs distinguish his work; he also minimized the visibility of the lines caused by the seams in the mold. Sometimes Ennion's marketing genius is overlooked for he was one of first artists to develop a brand name, "Ennion Made Me". The location of Ennion's workshop is debated, in part because his work is found throughout the Roman Empire. Some scholars believe he worked in Sidon in modern Lebanon, while others assert that he worked in northern Italy. The inscriptions he frequently used as decoration may provide a clue. Though his name may have been Semitic in origin, he signed it in Greek, the language of the eastern Mediterranean, not Italy. The city of Sidon, where he may have worked, had all the raw material for glass-making and extensive trade connections. Below are pictures of Ennion objects from the Shlomo Moussaieff Collection and Art Museums around the world. Click on the pictures to enlarge them.



The Yale University Art Gallery  
<http://artgallery.yale.edu/>



This glass was in the Heerlen Show  
<http://www.thermenmuseum.nl/>

#### The Author

This site is in two parts: examples of The Allaire Collection of Glass and notes of interest on Glass. The collection is shown in the center of this screen and on the lower right side under Categories. The notes are listed on the top right side under Pages.

#### The Pages

1. ABOUT THE COLLECTORS
2. GLASS BIBLIOGRAPHY
3. MUSEUMS GLASS COLLECTIONS AND EXHIBITIONS
  - \*\*The Israel Museum, Jerusalem Made by Ennion: Ancient Glass Treasures from the Shlomo Moussaieff Collection
  - \*\*FIRE AND LIGHT EXHIBITION AT THE NEWARK MUSEUM
  - \*\*MEDIEVAL GLASS For Popes, Princes and Peasants
  - \*\*PARIS AND NORTHERN FRANCE MUSEUM COLLECTIONS
  - \*\*METROPOLITAN MUSEUM OF ART (NEW YORK)
  - \*\*THE TOLEDO MUSEUM OF ART GLASS COLLECTION
  - \*\*THE PHILADELPHIA MUSEUM OF ART GLASS COLLECTION
  - \*\*THE NEW YORK HISTORICAL SOCIETY GLASS COLLECTION
  - \*\*ROMAN GLASS EXHIBITION IN HEERLEN HOLLAND
  - \*\*J. PAUL GETTY MUSEUM
4. HISTORICAL GLASS PERIODS
  - \*\* GLASS OF THE BYZANTINE PERIOD & EARLY MIDDLE AGES
  - \*\*GLASS OF THE MIDDLE AGES

Siehe unter anderem auch:

- PK 2000-2 SG, Eine Polemik: Köpfe von Pharaonen und Cäsaren aus Glas: gegossen, geschmolzen, gepresst, gedrückt, überfangen und dann geschnitten, geschliffen, poliert oder was?
- PK 2000-2 SG, Köpfe ägyptischer Pharaonen aus Glas:  
immer noch ein Geheimnis der ägyptischen Glasmacher
- PK 2002-2 SG, Kamen die ägyptischen Glasmacher der Amarna-Zeit aus Mitanni?
- PK 2000-5 SG, Form-geblasenes Glas (Schale Ennion, 1 Jhdt. n.Chr.)
- PK 2003-1 SG, Reflections on Ancient Glass from the Borowski Collection - Bible Lands Museum Jerusalem [Überlegungen zu antikem Glas ...]
- PK 2009-4 SG, Ein wichtiges Buch: Lierke, Die nicht-geblasenen antiken Glasgefäße ...  
Deutsche Glastechnische Gesellschaft, 2009  
(u.a. Hinweise auf die wichtigsten PK-Artikel zu antikem Glas)
- PK 2011-2 Yalcin, Rückkehr nach Uluburun - Unterwasserarchäologie und die Handelswege in der Spätbronzezeit [Antike Welt 2011-3]
- PK 2011-4 SG, Guttandin u.a., Inseln der Winde - Die maritime Kultur der bronzezeitlichen Ägäis  
Ausstellungskatalog Heidelberg 2011
- PK 2011-4 SG, Grose, Early Ancient Glass - Core-formed, Rod-formed, and Cast Vessels and Objects from the Late Bronze Age to the Early Roman Empire ... (Auszüge)
- PK 2011-4 SG, Wight, Molten Color. Glass Making in Antiquity.  
The J. Paul Getty Museum, Los Angeles 2011 (Auszug)
- PK 2011-4 SG, Made by Ennion: Ancient Glass from the Shlomo Moussaieff Collection  
Exhibition May 31, 2011 - January 1, 2012  
The Israel Museum, Jerusalem, Temporary Exhibitions Hall, Archaeology Wing

---

Siehe unter anderem auch:

WEB PK - in allen Web-Artikeln gibt es umfangreiche Hinweise auf weitere Artikel zum Thema:  
suchen auf [www.pressglas-korrespondenz.de](http://www.pressglas-korrespondenz.de) mit GOOGLE Lokal →

- [www.pressglas-korrespondenz.de/aktuelles/pdf/pk-2000-2w-glas-pharao-caesar.pdf](http://www.pressglas-korrespondenz.de/aktuelles/pdf/pk-2000-2w-glas-pharao-caesar.pdf)
- [www.pressglas-korrespondenz.de/aktuelles/pdf/pk-2000-2w-glas-aegypten-mitanni.pdf](http://www.pressglas-korrespondenz.de/aktuelles/pdf/pk-2000-2w-glas-aegypten-mitanni.pdf)
- [www.pressglas-korrespondenz.de/aktuelles/pdf/pk-2002-2w-glas-aegypten-mitanni.pdf](http://www.pressglas-korrespondenz.de/aktuelles/pdf/pk-2002-2w-glas-aegypten-mitanni.pdf)
- [www.pressglas-korrespondenz.de/aktuelles/pdf/geisel-form-geblasenes-glas.pdf](http://www.pressglas-korrespondenz.de/aktuelles/pdf/geisel-form-geblasenes-glas.pdf) (Ennion)
- [www.pressglas-korrespondenz.de/aktuelles/pdf/geisel-form-geblasenes-glas-2.pdf](http://www.pressglas-korrespondenz.de/aktuelles/pdf/geisel-form-geblasenes-glas-2.pdf)
- [www.pressglas-korrespondenz.de/aktuelles/pdf/pk-2003-1w-busz-tuerkis-quarzkeramik](http://www.pressglas-korrespondenz.de/aktuelles/pdf/pk-2003-1w-busz-tuerkis-quarzkeramik)
- [www.pressglas-korrespondenz.de/aktuelles/pdf/pk-2003-1w-sg-quarzkeramik-iran](http://www.pressglas-korrespondenz.de/aktuelles/pdf/pk-2003-1w-sg-quarzkeramik-iran)
- [www.pressglas-korrespondenz.de/aktuelles/pdf/pk-2003-1w-sg-rosetten-echnaton.pdf](http://www.pressglas-korrespondenz.de/aktuelles/pdf/pk-2003-1w-sg-rosetten-echnaton.pdf)
- [www.pressglas-korrespondenz.de/aktuelles/pdf/pk-2003-1w-bianchi-reflections-ancient-glass.pdf](http://www.pressglas-korrespondenz.de/aktuelles/pdf/pk-2003-1w-bianchi-reflections-ancient-glass.pdf)
- [www.pressglas-korrespondenz.de/aktuelles/pdf/pk-2009-4w-sg-lierke-glasgeschichte-2009.pdf](http://www.pressglas-korrespondenz.de/aktuelles/pdf/pk-2009-4w-sg-lierke-glasgeschichte-2009.pdf)
- [www.pressglas-korrespondenz.de/aktuelles/pdf/pk-2011-2w-yalcin-uluburun.pdf](http://www.pressglas-korrespondenz.de/aktuelles/pdf/pk-2011-2w-yalcin-uluburun.pdf)
- [www.pressglas-korrespondenz.de/aktuelles/pdf/pk-2011-4w-guttandin-inseln-winde-uluburun.pdf](http://www.pressglas-korrespondenz.de/aktuelles/pdf/pk-2011-4w-guttandin-inseln-winde-uluburun.pdf)