

Abb. 2005-4/xxx

Page of a Curt Schlevogt catalogue intended for the French market with toilette garnitures and flacons, before 1939 collection Ornela AG, Desná colours „cristal, jade, lapis, turquoise, rose, champagne, noir / cristal“

[SG: some of these garnitures (mid below) are known from pictures in the collection Ingrid Schlevogt for a catalogue which was not more published before World War II 1939. The other items were not known until now (above left and right).]

look also for PK 2004-1, Anhang 04

Abb. 2004-1-xxx/013, Musterbilder Schlevogt 1939, Bild 12, Ingrid, Flakon / Stöpsel Nr. 11/12, Sitzender Akt mit Wildem Wein

Abb. 2001-03/708, Musterbilder Schlevogt 1939, Bild 25, Flakon Sitzende Nackte mit Blättern 76/77 u. 76, Flakon Sitzende Nackte 83/77, Ingrid 1=3

Abb. 2001-03/709, Musterbilder Schlevogt 1939, Bild 34, Flakons Junge mit Blättern 33/V/12, 33/III/12, 33/II/12, Dose Sitzende Nackte mit Blättern 55, Dose Sitzende Nackte mit Blättern 86/87, opakes Glas, Ingrid 1=4 all collection Ingrid Schlevogt

## Artistic Crystalware from North Bohemia [Künstlerisches Kristall aus Nordböhmen]

Article from GLASS STYLE, July 2005, pages 92/93

publication with friendly agreement of Mr. Borek Tichý, Ornela AG, Desná. Thanks a lot!

The range of products produced in the 1930s and 1940s under the brand name of “Ingrid” are well known to collectors of artistic crystalware the world over. The collection took on this Nordic-sounding name after a girl whose veins coursed with the blood of two prominent manufacturers of glass from North Bohemia – Heinrich Hoffmann and Curt Schlevogt.

The first of these companies principally specialised in exports and the production of imitation precious stones, beads, and buttons after its foundation in the year 1867. It was under the influence of the Decorative Art Exhibition that was organised in Paris in 1925 that the compa-

ny began to produce artistically formed crystalware as inspired by the successful French designer and businessman René Lalique. Cooperation with local artists such as František Pazourek, Zdeněk Juna, and Alexander Pfohl enabled the firm to put together an original range of products that was acknowledged at world fairs and which asserted itself in the face of competition from foreign products. The company manufactured vanity, liqueur, coffee, and writing sets, vases, table decorations, and other pieces using transparent and opaque glass such as jade, lapis, and ivory.

The Curt Schlevogt company was established in the town of Jablonec nad Nisou in 1928. It began making luxurious pressed glass during the Thirties and presented a comprehensive collection of such products at the spring fair in Leipzig in 1934 under the name of "Ingrid". The collection consisted of vanity and smoking sets, vases, table decorations, sculptures, liqueur sets, and devotional articles. The company principally gained renown thanks to its opaque glass products as supplied by the glassworks of Josef Riedel, items that were produced in colours such as jade, lapis, turquoise, and other less-than-traditional shades.

Abb. 2005-4/xxx  
1934 - Four-year old Ingrid with grandfather Curt Schlevogt, founder of the company of the same name collection Ingrid Schlevogt



Abb. 2005-4/xxx  
Glass plaque „Cristaux d'art Ingrid“, before 1939 firm Curt Schlevogt intended for the French market collection Ingrid Schlevogt



A wealth of European artists collaborated on the creation of the company collection under the watchful eye of Henry Günther Schlevogt, the founder's son and owner of the company from 1934 onwards. Such artists included Vally Wieselthier, Franz Hagenauer, Ena Rottenberg, Eleon von Rommel, Mario Petrucci, and many more. The products they designed were presented in the

colour catalogue of the "Ingrid" collection that was published at the turn of the Thirties and Forties. The girl whose name became synonymous with the artistic crystalware manufactured in the Jizera Mountain area of North Bohemia was the granddaughter of Heinrich Hoffmann and Curt Schlevogt and the daughter of their children, Henry G. Schlevogt and Charlotte Hoffmann. Ingrid was born in 1930 and was a mere four years of age at the time when her father put together the collection that was to bear her name.

Abb. 2004-1-xxx/025  
Catalogue pictures Schlevogt 1939, No. 25, Ingrid 1=3 [scale]  
Flakon / Stöpsel Nr. 76/77 u. 76/U?  
Sitzender Akt mit Blüten / Zwei sitzende Akte  
Flakon / Stöpsel Nr. 83/77, Zwei sitzende Akte collection Ingrid Schlevogt



Abb. 2001-03/703  
Catalogue pictures Schlevogt 1939, No. 1, Flakon „Fische“ mit Stopfen „Kniende Nackte“ 13/14, opakes Glas, Ingrid collection Ingrid Schlevogt



All major glassmaking companies in the Czechoslovakia of that time were nationalised after 1945, the glassworks in the Jizera Mountain area later being incorporated in the joint enterprise known as "Jablonecké sklárny Desná" (the Jablonec Glassworks in Desná). Even throughout the socialist era in the country the original glass products of the Hoffmann and Schlevogt companies continued to be produced and sold under the origi-

nal name of "Ingrid". The first half of the 1990s saw the division of the Jablonec Glassworks national enterprise and the foundation of new glassmaking companies as part of a privatisation programme in the Czech Republic. The Ornela Company Limited thus became the flag-bearer for the tradition of artistic crystalware production in the Jizera Mountain area.

Abb. 2004-1-xxx/021  
 Catalogue pictures Schlevogt 1939, No. 21, Ingrid  
 Vase Nr. 46/47, drei Hunde (Terrier?)  
 Kniender Akt mit Schale Nr. 1  
 collection Ingrid Schlevogt

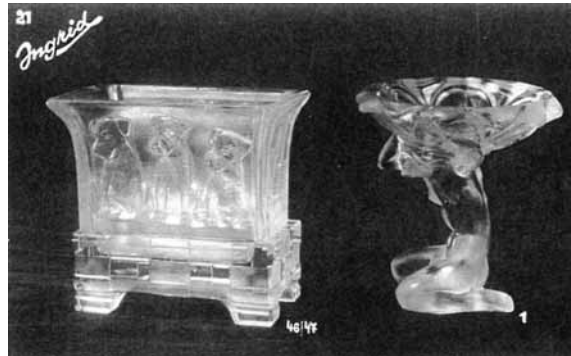


Abb. 2005-4/xxx  
 „Beautiful Atlanta“, Ornela AG, Desná, 2003 - 2005 ...  
 look also for PK 2004-1, Anhang 04, Abb. 2004-1-xxx/021  
 catalogue pictures Schlevogt 1939, No. 21, Ingrid  
 Kniender Akt mit Schale Nr. 1



The "Ingrid" brand and the celebrated history of the Curt Schlevogt company remain for Ornela a symbol of artistic quality and perfection of craft and technology. The products of the "Ingrid" collection are still made to this day from the original metal moulds and are offered in a newly-created collection under the name of "Desná".

The name of "Ingrid" and the products that were made under this brand name from the 1930s onwards have unfortunately become the subject of dishonourable trade in recent years. The "Ingrid" brand, the mark of the artistically and technologically high-quality glass made in North Bohemia, has fallen into the hands of manufactu-

rers of poor quality glass imitations thanks to "shrewd" profiteering.

Abb. 2004-1-xxx/022  
 Catalogue pictures Schlevogt 1939, No. 22, Ingrid, 1=2  
 Schale Nr. 45, Badende  
 Schale Nr. 90, Reitender Akt  
 Schale Nr. 98, Pflanzen?  
 collection Ingrid Schlevogt



Abb. 2005-4/xxx  
 „Susanna at her bath“, Ornela AG, Desná, 2004 - 2005 ...  
 look also for PK 2004-1, Anhang 04, Abb. 2004-1-xxx/022  
 catalogue pictures Schlevogt 1939, No. 22, Ingrid, 1=2  
 Schale Nr. 45, Badende



The name Ingrid symbolises artistic crystalware in North Bohemia and is one that lived through all the fraught times of the 20th century. Yet now at the beginning of the new millennium there is a new threat, the threat that the dubious practices of certain opportunists will try to profit from the celebrated tradition of glass production in North Bohemia.

Contemporary products from the former "Ingrid" collection that are now made by the Ornela Company Limited as the "Desna" collection.

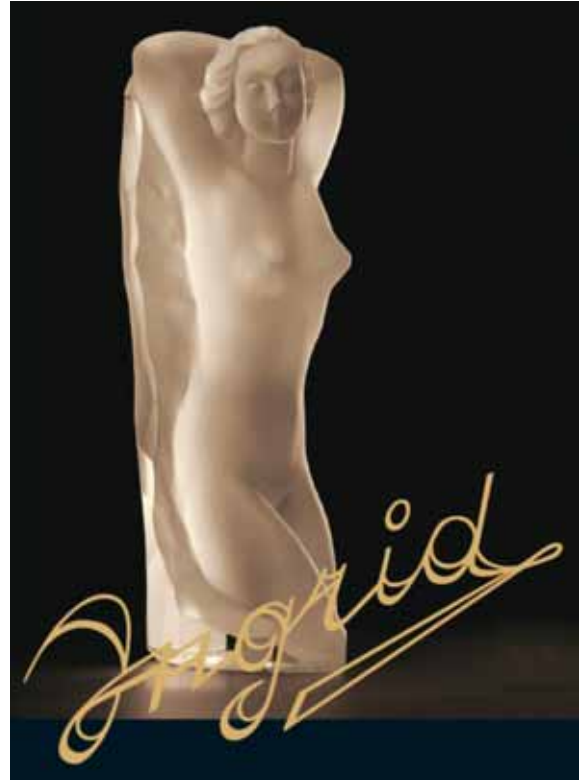
Abb. 2001-03/606  
 Catalogue Schlevogt 1939, page 4  
 "Akt" Nr. 794, H 31 cm  
 Modell: Ena Rottenberg, Wien, „Grand Prix“ Paris [1937]  
 collection Ingrid Schlevogt  
 compare Riedel 1991, p 94, Nr. 183  
 Riedel 1994, p 138, Nr. 261  
 Adlerová 1972, p 22, Nr. 147, um 1935: „Produktion Josef  
 Riedel, Polaun, für die Kollektion „Ingrid“ der Firma Curt  
 Schlevogt, Gablonz“  
 Sellner 1995-4, p 96 „Form 1931“



Akt  
 Modell: Ena Rottenberg, Wien  
 „Grand Prix“ Paris

31 cm 29

Abb. 2005-4/xxx  
 The glass sculpture entitled "Akt" [Nude], which was de-  
 signed by Ena Rottenberg, was awarded with the Grand  
 Prix in Paris in 1937. The product, which is kept in the Muse-  
 um of Glass and Costume Jewellery in Jablonec nad Nisou,  
 comes from the last original pre-war "Ingrid" catalogue  
 s.a. PK 2001-3, Anhang 03, Abb. 2001-03/606  
 MB Schlevogt 1939, Seite 4, Akt Nr. 794, H 31 cm  
 Modell: Ena Rottenberg, Wien, „Grand Prix“ Paris [1937]  
 collection Ingrid Schlevogt  
 compare Riedel 1991, p 94, Nr. 183  
 Riedel 1994, p 138, Nr. 261  
 Adlerová 1972, p 22, Nr. 147, um 1935: „Produktion Josef  
 Riedel, Polaun, für die Kollektion „Ingrid“ der Firma Curt  
 Schlevogt, Gablonz“  
 Sellner 1995-4, p 96 „Form 1931“



#### Look also for:

- PK 2001-2 Anhang 04, SG, Neumann, Schlevogt, Stopfer,  
 Musterbuch Heinrich Hoffmann, Gablonz a. N., um 1927 (Auszug)
- PK 2001-3 Anhang 03, SG, Schlevogt, Musterbuch "Ingrid" der Fa. Curt Schlevogt, Gablonz a. N.,  
 um 1939 (Auszug)
- PK 2002-5 Stopfer, Warnung an alle Sammler von Hoffmann- und Schlevogt-Gläsern
- PK 2003-4 SG, Stopfer, Warning for Collectors of Czech Art Glass from the years 1930 to 1970:  
 Heinrich Hoffmann, Henry G. Schlevogt, Rudolf Hloušek, Josef Inwald a.o.!  
 Poor Copies from Firms Czech It Out Inc. and Jaromír Schubert JaS  
 (look also for German and Czech translations)
- PK 2004-1 Anhang 04, SG, Schlevogt, Musterbilder „Ingrid“ der Fa. Curt Schlevogt, Gablonz a. N.,  
 um 1939, ergänzt
- PK 2005-2 Schlevogt, SG, Zum Schicksal der Firma Curt Schlevogt, Jablonec, von 1945 bis 1948
- PK 2005-3 SG, Sechs geheimnisvolle Fotografien mit Flakons aus Jablonec n. N. um 1945-1948  
 zugeschrieben „NÁRODNÍ SPRÁVA CURT SCHLEVOGT JABLONEC n. N.“
- PK 2005-3 SG, Zur Umstellung der Glasherstellung in der Tschechoslowakei nach dem Ende des 2.  
 Weltkriegs, Reproduktionen von Gläsern der Firmen Hoffmann, Schlevogt und anderen  
 von 1945 bis 1990 (mit ausführlichen Literaturangaben)

Abb. 2005-4/xxx

Example of the opaque „jade“ glass products on offer in the „Ingrid“ catalogue Curt Schlevogt, about 1939  
look also for PK 2001-3, Abb. 2001-03/620, MB Schlevogt 1939, Seite 19, Putten-Toilette-Garnitur in jade und lapis, Nr. 180  
compare Riedel 1991, S. 96, Nr. 186, and Riedel 1994, S. 140, Nr. 265, after 1930, Lapis-Glas, gepresst u. nachveredelt,  
„Produktion Josef Riedel, Polaun, für die Kollektion „Ingrid“ der Firma Curt Schlevogt, Gablonz“

