



Abb. 2014-3/16-01 (Maßstab ca. 90 %)

Panther on a tree trunk with leaves, smoke-grey cast glass, H 14 cm, L 17 cm
collection Rýgl

signature „PH“: [Princess House, USA / Germany / France, 1963 / Wonders of the Wild / 24 % Lead Crystal / Cristal au plomb](#)

Filip Rýgl, Louis Solomon, SG

May 2021 / August 2014

A Panther of Cast Smoke-glass, Signature „PH“ - [Princess House](#), 1963

Hello, I have a big request for you. I have a sculpture of a panther and in vain tried to find possible manufacturers. I beg you in the annex to check the photos and I would like to ask you too, if you do know which manufacturer could produce such a sculpture? The dimensions are 17 x 14 cm. It is signed by „PH“. Thank you very much in advance for your answer. I have the contact for you from Phdr. Petr [Nový](#) from [Jablonec museum for glass and jewellery](#). Sincerely Filip Rýgl

SG: Hello Mr. Rýgl, I have never seen this very important panther and I have no idea who could be hidden behind "PH" - if you agree I would like to publish your pictures and question at my website - www.pressglas-korrespondenz.de - maybe somebody knows more than we ..., best wishes, Siegmur Geiselberger

Rygl: Hello, thank you very much for your message. Yes, I agree and I will be very happy. In my opinion it is very well made and is a wonderful work.



SG: Hello Mr. Rýgl, I have searched with GOOGLE for **artists in Europe** with the signature “PH” but could not find any one. And I searched for glass figures of animals from **German producers** like Göbel, Nachtmann, Villeroy and others - no hit at all. They did not produce and sell figures with such a true live. There was a German artist who made similar animal figures - but I could not remember his name. Rosenthal or Wagner & Apel in Germany made similar figures - but of porcelain. With GOOGLE Pictures one may also find such figures of animals of the wilderness like bears and tigers of Russian porcelain or lions of bronze, maker unknown. And of course I found such figures made of resin ... and Chinese figures made of brass ...

I think that this figure was made most probably in the years **after 1948/1952** - the famous “**Fifties**” with their “**New Look**”. The **process** for making such a complicated figure with such a high quality of glass is very intricate! It is not simply pressed - rather **cast glass**. Therefore I am very sure that it was made in **Czechoslovakia after World War II**.



I know only one crystal glass figure of a **tired panther** (or was it a tired **lion?**): it was made by **Baccarat** in France about **1880** and copied by **S. Reich & Co.** in Moravia about **1880**. Other animal figures of crystal glass were made by **St. Louis** in France also about **1870**. A **bulldog** was made by St. Louis already about **1840**! A plenty of glass figures of animals with high quality was made by **Josef Riedel, Polaun** - today

Desná / Czech Republic - about **1885**. Many glass dogs were made by **Portieux** in **France** and glass lions and dogs by **English** glass works ... and innumerable hens ... all over the world!



Louis Solomon, Mai 2021: This jaguar was marketed by **Princess House**, a multi-level marketing firm headquartered in **Taunton, Massachusetts, USA**. The company was founded in **1963**. According to the Replacements, the figurine was originally sold with a **wooden base**. I believe that the item was made in **Germany** and was **24 % lead crystal**. It was part of a **series of animal figurines** called the „**Wonders of the Wild Collection**“ and sold at home parties for \$62.95 USD. This label appears directly below - Ltd. web site:

www.replacements.com/p/princess-house-animals-figurines-jaguar-figurine-wood-base/phcanf/95906481



Abb. 2014-3/16-02 (Maßstab ca. 100 %)

Panther on a tree trunk with leaves, smoke-grey cast glass, H 14 cm, L 17 cm

collection Rýgl

signature „PH“: Princess House, USA / Germany / France, 1963 / Wonders of the Wild / 24 % Lead Crystal / Cristal au plomb



Abb. 2003-2/124
Dose mit Walzen, Deckel mit liegendem „Müden Löwen“
Musterbuch Glas-Manufactur S. Reich & Co. 1880
Tafel B, Nr. 1722
Sammlung Museum Valašské Meziříčí Inv.Nr. 40/03

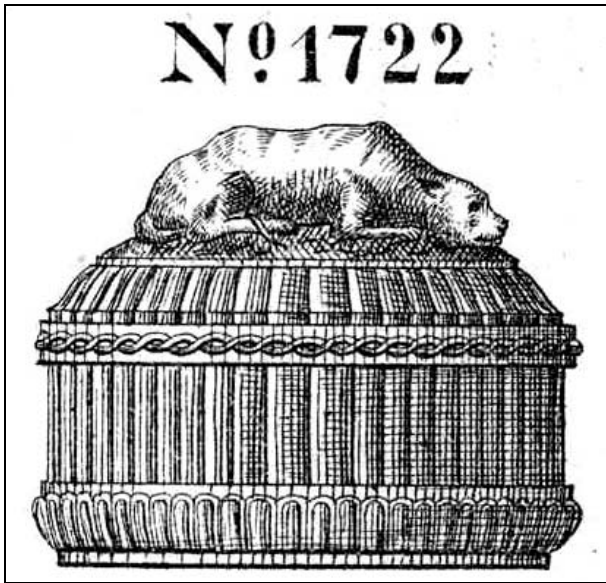


Abb. 2003-2/147
Dose mit Walzen, Deckel mit liegendem „Müden Löwen“
farbl. Pressglas, Figur mattiert, H 9,8 cm, L 11,5 cm, B 6,5 cm
Sammlung SG PG-693, ehem. Sammlung Lenek
s. MB Glas-Manufactur S. Reich & Co. 1880
Tafel B, Gepresstes Glas, Nr. 1722
Sammlung Museum Valašské Meziříčí Inv.Nr. 40/03



Siehe unter anderem auch:

WEB PK - in allen Web-Artikeln gibt es umfangreiche Hinweise auf weitere Artikel zum Thema:
suchen auf www.pressglas-korrespondenz.de mit GOOGLE Lokal →

www.pressglas-korrespondenz.de/aktuelles/pdf/pk-1999-4w-sg-hunde-katzen.pdf
www.pressglas-korrespondenz.de/aktuelles/pdf/chiarenza-british-lion.pdf PK 2000-2
www.pressglas-korrespondenz.de/aktuelles/pdf/pk-2003-2w-sg-reich-dose-jaeger.pdf (tired lion)
www.pressglas-korrespondenz.de/aktuelles/pdf/pk-2005-1w-sg-dose-affe-baccarat.pdf
www.pressglas-korrespondenz.de/aktuelles/pdf/pk-2005-2w-christoph-kater-loewe.pdf
www.pressglas-korrespondenz.de/aktuelles/pdf/pk-2007-1w-andersen-louis-bulldogge.pdf
www.pressglas-korrespondenz.de/aktuelles/pdf/pk-2010-1w-stopfer-louis-1872-loewe.pdf
www.pressglas-korrespondenz.de/aktuelles/pdf/pk-2011-3w-kuban-riedel-sphinx.pdf
www.pressglas-korrespondenz.de/aktuelles/pdf/pk-2012-2w-tschukanowa-meisenthal-dose-loewe-1900.pdf
www.pressglas-korrespondenz.de/aktuelles/pdf/pk-2013-4w-kuban-riedel-hund-1885.pdf
www.pressglas-korrespondenz.de/aktuelles/pdf/pk-2013-4w-stopfer-riedel-loewen-1885.pdf
www.pressglas-korrespondenz.de/aktuelles/pdf/pk-2014-2w-kuban-ascher-hunde-1948.pdf
www.pressglas-korrespondenz.de/aktuelles/pdf/pk-2014-3w-rygl-panther-ph-unknown.pdf



Abb. 2014-3/16-03 (Stand 2021-05 / **Out of Stock**)

<https://www.replacements.com/crystal-princess-house-animals-and-figurines-jaguar-figurine-and-wood-base/p/95906481>

Panther on a tree trunk with leaves, smoke-grey cast glass, H 6 inch / H 14 cm, L 17 cm

signature „PH“: Princess House, USA / Germany / France, 1963 / Wonders of the Wild / 24 % Lead Crystal / Cristal au plomb

The screenshot shows a web browser window displaying the Replacements, Ltd. website. The browser's address bar shows the URL: <https://www.replacements.com/crystal-princess-house-animals-and-figurines-jaguar-figurine-and-wood-base/p/95906481>. The website header includes the company logo, a search bar, and navigation links for ACCOUNT and CART. The main navigation menu lists categories: CHINA DINNERWARE, CRYSTAL GLASSWARE, SILVER FLATWARE, COLLECTIBLES, ESTATE JEWELRY & WATCHES, and SPECIALS. The breadcrumb trail reads: Home / Crystal / Princess House / Animals & Figurines / Jaguar Figurine & Wood Base. The product title is 'Jaguar Figurine & Wood Base Animals & Figurines by PRINCESS HOUSE'. The status is 'Out of Stock'. A 'Find This For Me' button is present. Below it, a text block explains the service: 'With our "Find This For Me" service, we notify you via email once we have stock.' A link to 'View All Pieces in This Pattern' is also visible. The 'Product Information' section lists: Height: 6 in; Special Characteristics: 899,WOND WILD; Crafted In United States / Germany / France; Piece Code: JAGW; Condition: Used (each item is inspected for quality and is guaranteed to be in excellent condition); Web ID: 95906481. The footer contains links for HELP & INFO, OUR COMPANY, SERVICES, and FOLLOW US, along with social media icons and a BBB Accredited Business logo with a rating of A+.