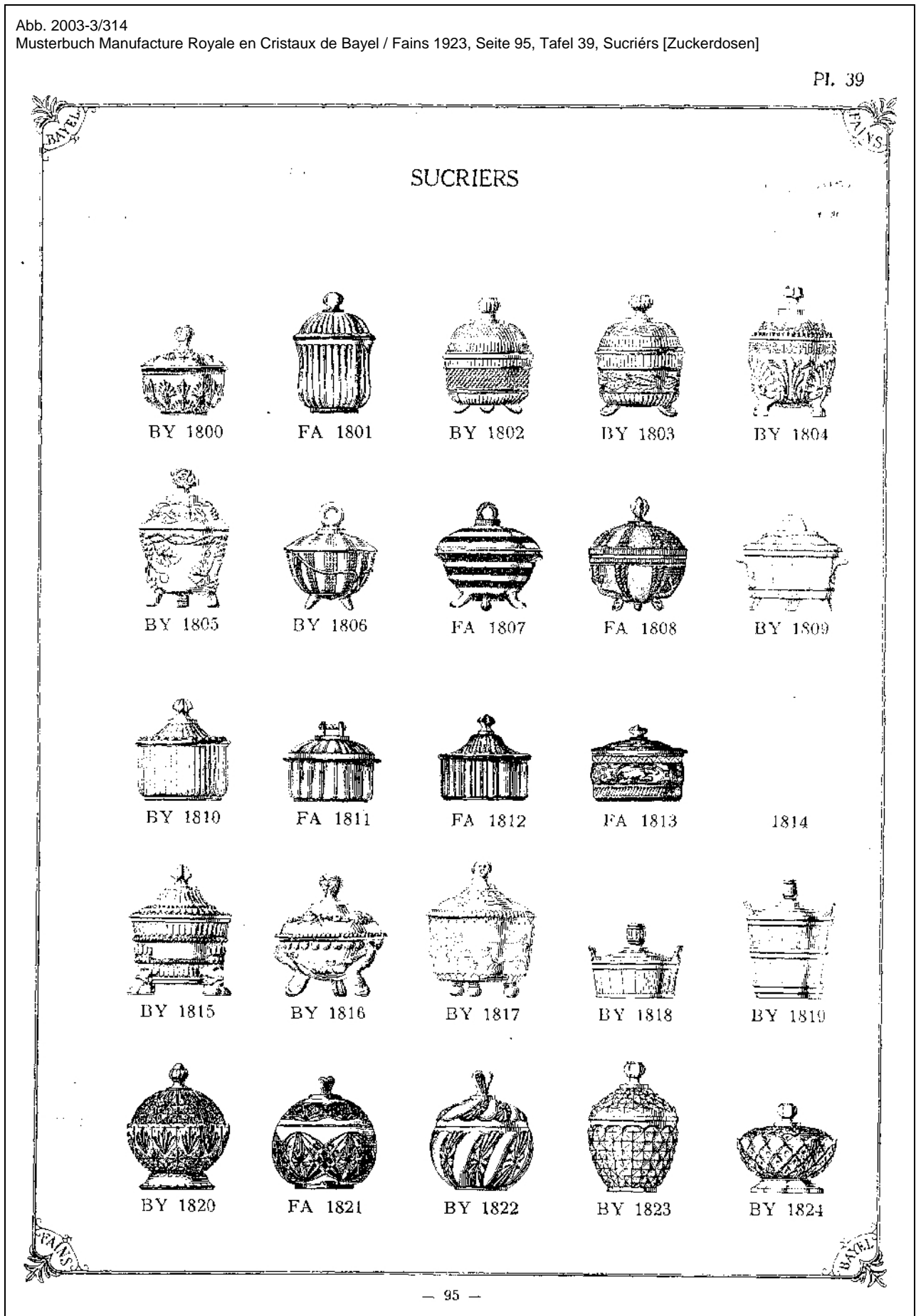


Abb. 2003-3/314

Musterbuch Manufacture Royale en Cristaux de Bayel / Fains 1923, Seite 95, Tafel 39, Sucrriers [Zuckerdosen]

Pl. 39



Siehe auch: PK 2001-5

Valsar, Pressglas der Manufacture Royale en Cristaux de Bayel und der Glashütte in Fains bei Bar le Duc

Abb. 2003-3/315

Musterbuch Manufacture Royale en Cristaux de Bayel / Fains 1923, Seite 97, Tafel 40, Sucrriers [Zuckerdosen]

Pl. 40

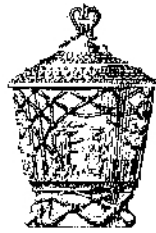
SUCRIERS



BY 1825



BY 1826



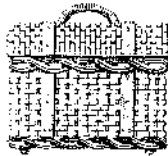
BY 1827



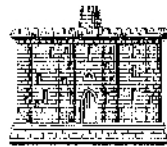
BY 1828



FA 1829



BY 1830



BY 1831



BY 1832



FA 1833



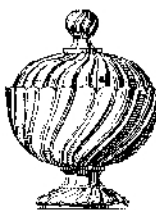
BY 1834



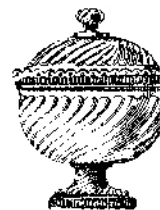
BY 1835



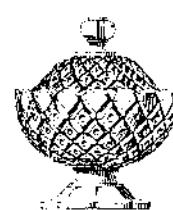
BY 1836



BY 1837



FA 1838



BY 1839



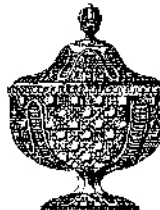
BY 1840



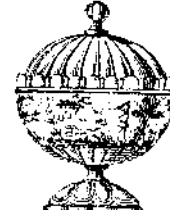
FA 1841



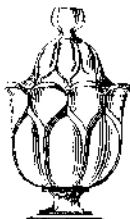
FA 1842



FA 1843



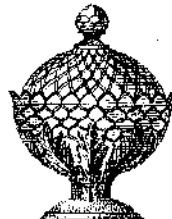
FA 1844



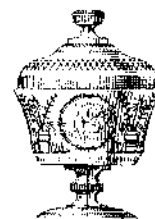
FA 1845



FA 1846



FA 1847



BY 1848



BY 1849